

TRAMEX REMOTE ENVIRONMENTAL MONITORING SYSTEM



The Tramex Remote Environmental Monitoring System has been designed and developed by Tramex for professionals who depend on the most accurate, reliable, real-time building environment temperature and relative humidity readings using state of the art technology to respond quickly to environmental changes and notify users. The TREMS-10 comprises 10 CS-RHTA Tramex Cloud Sensors and a Tramex Cloud Station router. Multiple Sensors can be used with one Station and additional sensor Accessory Packs are also available. Registration and on-site set-up is simple using a QR code check-in procedure. The on-site Sensors, with battery life of up to 15 years, transmit relative humidity, temperature (°C and °F), dew point and grains per pound / grams per kilo readings wirelessly via the Tramex Cloud Station enabling remote monitoring of up to 200 on-site Sensors on the Tramex Cloud platform.

Tramex Cloud is a secure platform to store and report your moisture, temperature and relative humidity measurements, get notified of adverse conditions and quickly monitor status from any browser. There are no SIM subscription fees with the Tramex Remote Environmental Monitoring System.



KIT CONTENTS

1. 10 x CS-RHTA Tramex Cloud Sensors
2. 1 x Tramex Cloud Station
3. 1 x Heavy Duty Protective Carry Case
4. Tramex Cloud Software Monitoring platform (Tablet not included)
5. Antennae for Cloud Station

Product Code: TREMS-10



AMBIENT
RH, T, DP, g/kg



TRAMEX CLOUD

SPECIFICATIONS

TRAMEX CLOUD SENSOR - SPECIFICATIONS & MEASURING RANGE



Sensors can be easily registered by scanning the QR code on the back of the instrument and clicking 'register' in your Cloud account.

Size:	100mm x 90mm x 35mm (3.94" x 3.54" x 1.38")	Transmission Range:	Over 3kms line-of-sight
Weight:	100g (3.53oz)	Communication Frequency:	Multiple readings per hour
Power:	Built in CR123A battery with up to 15 year lifespan	Identification:	Items individually coded for ease of install and logging identification.
Construction:	ABS enclosure		
Included:	Wall Mounting		

RELATIVE HUMIDITY SENSOR SPECIFICATIONS

Exceptional Accuracy:	±1.5%RH Range 0% to 80%RH ±2.0%RH Range 80% to 99%RH (@ 25°C (77°F))
Range:	0 to 100%RH
Resolution:	0.1% over the complete range
Drift:	<0.25%RH per year

TEMPERATURE SENSOR SPECIFICATIONS:

Exceptional Accuracy:	±0.1 °C Range 20°C to 60°C (±0.1°F Range 68°F to 140°F)
Range:	-40°C to 125°C (-40°F to 257°F)
Sensor Protection:	PTFE Film protects sensor opening from water & dust
Drift:	<0.03°C (0.04°F) per year

TRAMEX CLOUD STATION



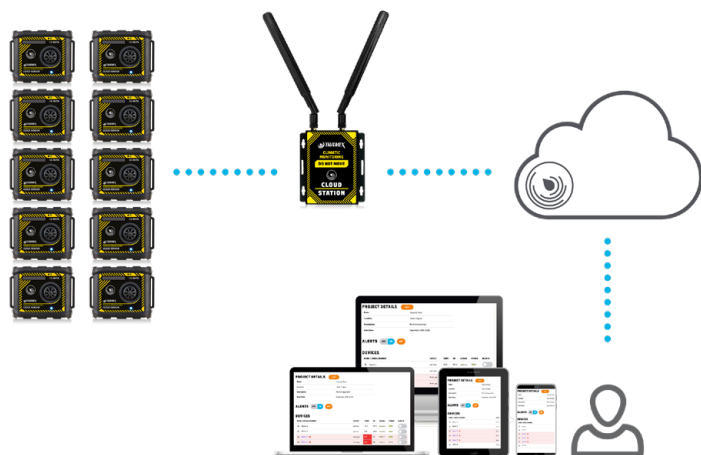
The Cloud Station can be easily registered by scanning the QR code on the back of the instrument and clicking 'register' in your Cloud account.

Size:	130mm x 115mm x 30mm (5.12" x 4.53" x 1.19")	Frequency:	Region Specific frequency available
Weight:	270g (9.5oz)	Security:	WPA2-PSK encryption, no unwarranted telemetry/tracking.
Power:	Universal AC Power Adapter		
Construction:	Wall-mountable Industrial Aluminium		

SPECIFICATIONS

TRAMEX CLOUD

The Tramex Cloud stores all your project details and logging information securely and allows for remote monitoring.



PROJECT DETAILS

EDIT

Name

Ground Floor

Location

Main Project

Description

Monitoring project

Start Date

September 25th 2020

ALERTS

OFF

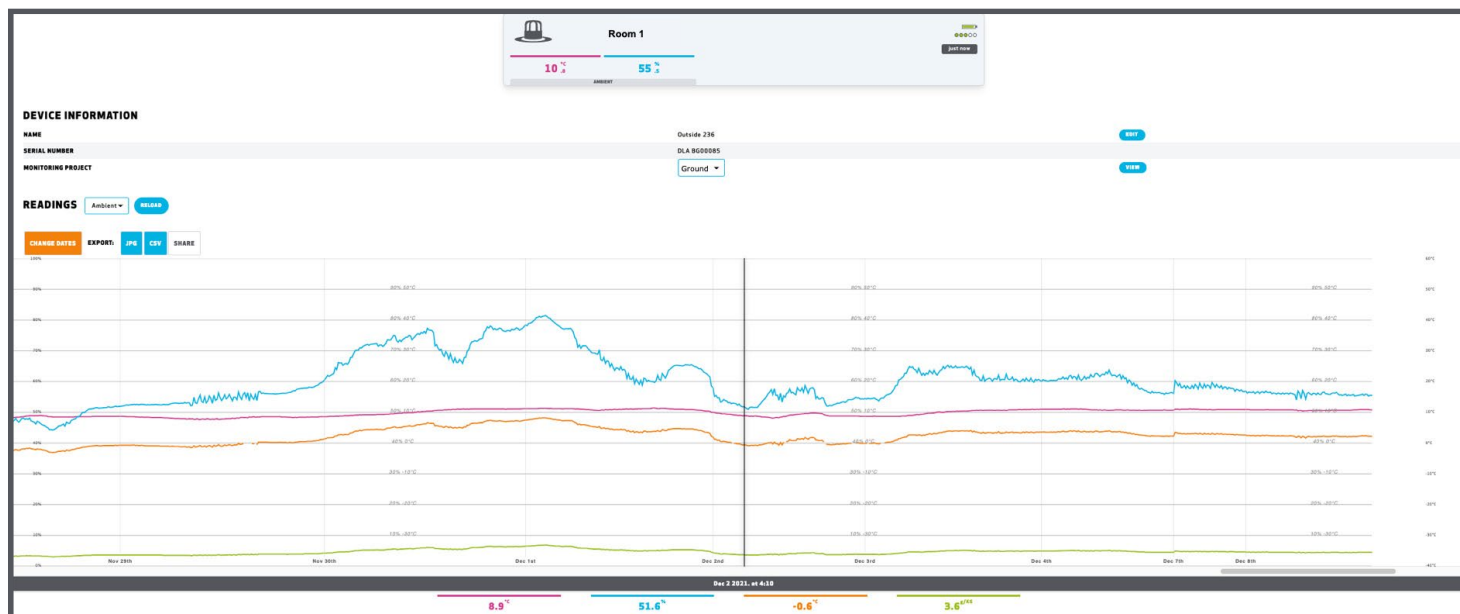
ON

EDIT

DEVICES

NAME / SERIAL NUMBER	LATEST	TEMP.	RH	SIGNAL	POWER	ALERTS
<div><div></div><div>Room 1</div></div>	just now	10.1	55.3	<div><div></div><div></div><div></div><div></div><div></div></div>	<div><div></div><div></div><div></div><div></div><div></div></div>	<div><div></div></div>
<div><div></div><div>Room 2</div></div>	just now	9.9	56.8	<div><div></div><div></div><div></div><div></div><div></div></div>	<div><div></div><div></div><div></div><div></div><div></div></div>	<div><div></div></div>
<div><div></div><div>Room 3</div></div>	9 min ago	9.7	57	<div><div></div><div></div><div></div><div></div><div></div></div>	<div><div></div><div></div><div></div><div></div><div></div></div>	<div><div></div></div>
<div><div></div><div>Room 4</div></div>	9 min ago	9.7	58	<div><div></div><div></div><div></div><div></div><div></div></div>	<div><div></div><div></div><div></div><div></div><div></div></div>	<div><div></div></div>
<div><div></div><div>Room 5</div></div>	9 min ago	9.5	57.4	<div><div></div><div></div><div></div><div></div><div></div></div>	<div><div></div><div></div><div></div><div></div><div></div></div>	<div><div></div></div>
<div><div></div><div>Room 6</div></div>	10 min ago	9.6	55.7	<div><div></div><div></div><div></div><div></div><div></div></div>	<div><div></div><div></div><div></div><div></div><div></div></div>	<div><div></div></div>

Detailed logging charts



KIT SPECIFICATIONS

Size: 510mm x 410mm x 160mm (21.1" x 16.1" x 6.3")

Weight:

500g (17.6oz)

Power: 10 x CR123A 3-volt batteries (included)



tramexmeters.com.au