

FEEDBACK REMOTE ENVIRONMENTAL MONITORING SYSTEM



The Tramex Feedback Remote Environmental Monitoring System has been designed and developed by Tramex for professionals who depend on accurate, reliable, real-time building environment readings using state of the art technology to respond quickly to changes in the environment and notify users. The system comprises Tramex Feedback Data Logger Sensors, Tramex Feedback Cloud Links and a Tramex Cloud Router.

The on-site Feedback Sensors transmit relative humidity, temperature, dew point and grains per pound readings wirelessly via the Feedback Cloud Links and Tramex Cloud Routers enabling remote monitoring of multiple on-site Sensors via the Tramex Cloud platform.

Tramex Cloud is a secure platform to store and report your moisture, temperature and relative humidity measurements, get notified of adverse conditions and quickly monitor status from any browser.

Tramex Cloud is a secure hub for your moisture maps and monitoring projects. Used in conjunction with the Tramex Meters App, you can quickly and accurately store data from your moisture meters, loggers and sensors directly. App users on-site can be retrieving information, while data and reports can also be viewed directly from your desk.



FOR IOS & ANDROID DEVICES (PHONE NOT INCLUDED WITH KIT)



KIT CONTENTS

1. 10 X Feedback Datalogger DL-RHTA.
2. 2 X Feedback Cloud Link
3. 1 x Tramex Cloud Router
4. 1 x Heavy Duty Protective Carry Case
5. App available for Android and iOS (phone not included)

Product Code: FREMS



AMBIENT
RH, T, DP, g/kg



ACCOMPANYING
APP

SPECIFICATIONS

FEEDBACK DATALOGGER - SPECIFICATIONS & MEASURING RANGE



Size:	100mm x 90mm x 35mm (3.94" x 3.54" x 1.38")	Transmission Range:	Up to 50m (165ft) line-of-sight
Weight:	100g (3.53oz)	Bluetooth:	BLE Bluetooth Low Energy 4.2 compliant
Construction:	ABS enclosure	Identification:	Items individually coded for ease of install and logging identification.
Power:	1 x AA type battery 1.5 Volt		
Included:	Wall Mounting		

RELATIVE HUMIDITY SENSOR SPECIFICATIONS

Range:	0 to 100%RH
Accuracy:	±1.5%RH Range 0% to 80%RH ±2.0%RH Range 80% to 99%RH (@ 25°C (77°F))
Resolution:	0.1% over the complete range
Drift:	<0.25%RH per year

TEMPERATURE SENSOR SPECIFICATIONS:

Range:	-40°C to 125°C (-40°F to 257°F)
Accuracy:	±0.1 °C Range 20°C to 60°C (±0.1°F Range 68°F to 140°F)
Sensor Protection:	PTFE Film protects sensor opening from water & dust
Drift:	<0.03°C (0.04°F) per year

FEEDBACK CLOUD LINK



Size:	165mm x 80mm x 30mm (6.6" x 3.15" x 1.19")	Sensor Capacity:	up to 25 Feedback Data Logger sensors
Weight:	250g (8.8oz)	Recording rate:	Records every 30 minutes
Construction:	Wall-mountable ABS enclosure	Storage volume:	In case of Wi-Fi failure, stores 10 days of readings as back up
Power:	4 AA type 1.5 volt batteries	Transmission Range:	Up to 50m (165ft) line-of sight
		Identification:	Items individually coded for ease of install and logging identification.

SPECIFICATIONS

TRAMEX CLOUD ROUTER



Size:	130mm x 115mm x 30mm (5.12" x 4.53" x 1.19")	Router:	Hardware Reliability Watchdog. Based on OpenWrt
Weight:	270g (9.5oz)	Security:	WPA2-PSK encryption, IEEE 802.11b/g/n, hidden
Construction:	Wall-mountable Industrial Aluminium		Tramex SSID, hardened interface/frontend,
Power:	Universal AC Power Adapter		no unwarranted telemetry/tracking.
Identification:	Items individually coded for ease of install and logging identification.	Speed:	Built in 4G Module
		Network:	Tramex dedicated network.
			Automatic connectivity to FeedBack Cloud Link and Sensors.

Free App Available for Mobile and Tablet:



TRAMEX CLOUD

The Tramex Cloud stores all your project details and logging information securely and allows for remote monitoring.

PROJECT DETAILS

EDIT

Name

Ground Floor

Location

Main Project

Description

Monitoring project

Start Date

September 25th 2020

ALERTS

OFF

ON

EDIT

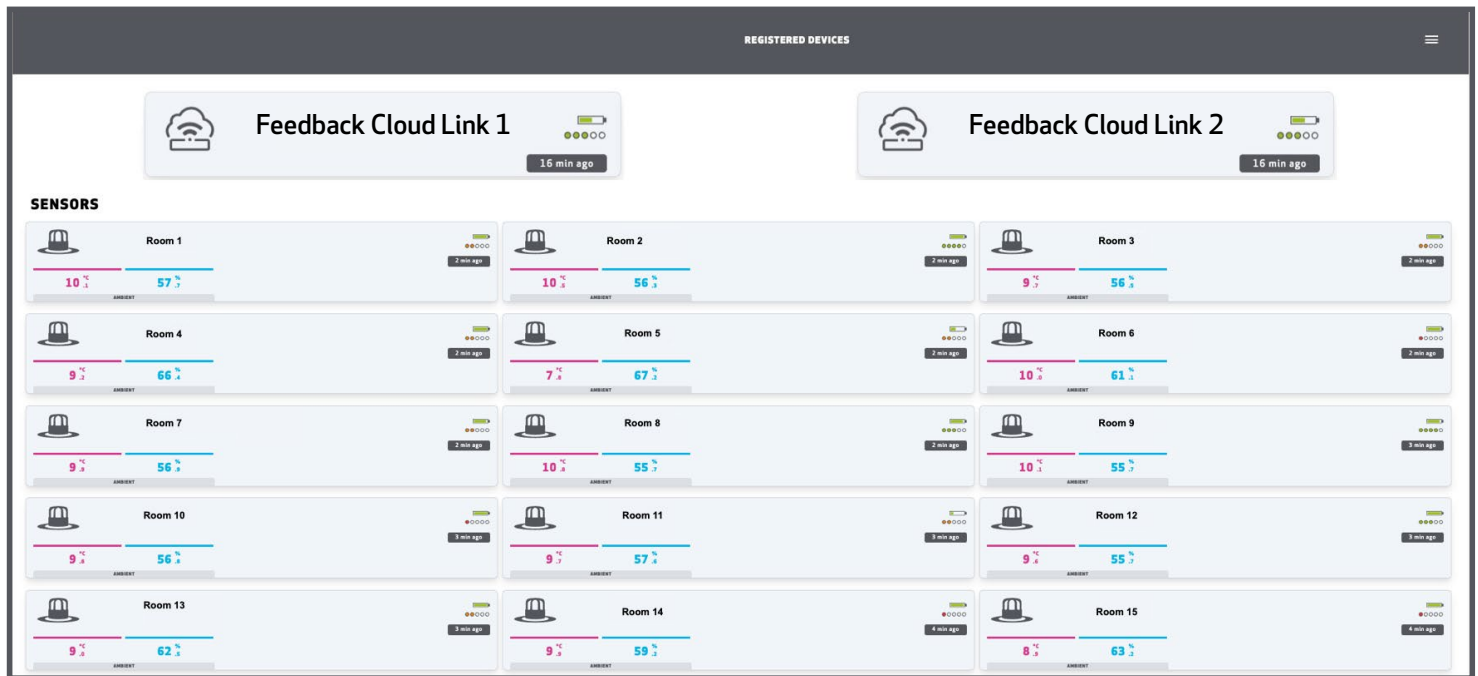
DEVICES

NAME / SERIAL NUMBER	LATEST	TEMP.	RH	SIGNAL	POWER	ALERTS
<div><div>Room 1</div></div>	just now	10.1	55.3	<div><div></div><div></div><div></div><div></div><div></div></div>	<div><div></div></div>	<div><div></div></div>
<div><div>Room 2</div></div>	just now	9.9	56.8	<div><div></div><div></div><div></div><div></div><div></div></div>	<div><div></div></div>	<div><div></div></div>
<div><div>Room 3</div><div></div></div>	9 min ago	9.7	57	<div><div></div><div></div><div></div><div></div><div></div></div>	<div><div></div></div>	<div><div></div></div>
<div><div>Room 4</div><div></div></div>	9 min ago	9.7	58	<div><div></div><div></div><div></div><div></div><div></div></div>	<div><div></div></div>	<div><div></div></div>
<div><div>Room 5</div><div></div></div>	9 min ago	9.5	57.4	<div><div></div><div></div><div></div><div></div><div></div></div>	<div><div></div></div>	<div><div></div></div>
<div><div>Room 6</div></div>	10 min ago	9.6	55.7	<div><div></div><div></div><div></div><div></div><div></div></div>	<div><div></div></div>	<div><div></div></div>

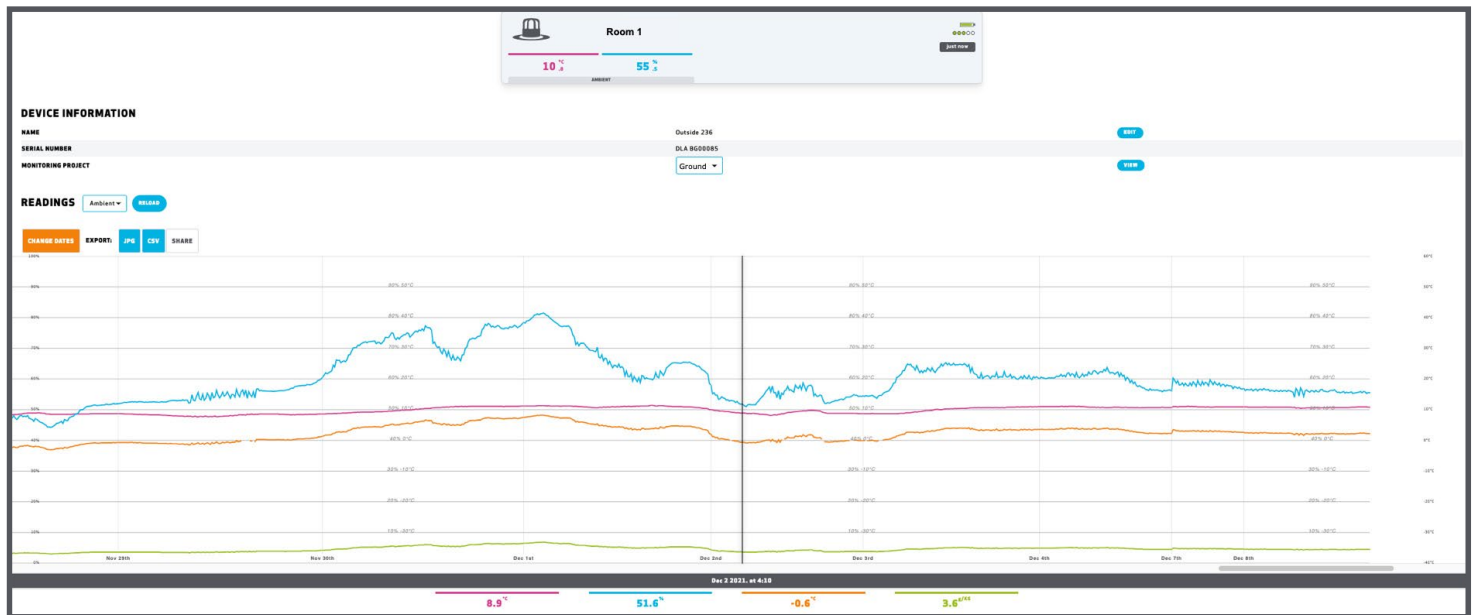
SPECIFICATIONS

TRAMEX CLOUD

Registered devices



Detailed logging charts



KIT SPECIFICATIONS

Size: 510mm x 410mm x 160mm (21.1" x 16.1" x 6.3")

Weight:

500g (17.6oz)

Power: 14 x AA type 1.5 volt batteries (included)