

BUILDING SURVEY INSPECTION EZ KIT



Tramex moisture meters are designed to locate elevated moisture & humidity conditions, which may be conducive to mold, microbial growth and wood destroying organisms. These damp conditions can often be hidden within or behind a material such as drywall and not obvious from visual inspection without the help of a non-destructive moisture meter. Once the moisture source is identified and stopped, remedial action can be taken leading to a healthier building environment. This complete moisture and humidity testing kit features the multifunctional Tramex MRH III digital moisture meter allowing for non-invasive testing of moisture conditions in numerous building materials such as drywall, wood, plaster, brick, ceramic tiles, resilient flooring, laminates and roofing. The MRH III and reusable Ambient Relative Humidity Hygro-i2 Short Probe allow for testing relative humidity, temperature and dew point in the environment. The heavy-duty pin-probes measure moisture content in wood, and the insulated 7.8" pins allow for deep wall cavity probing. Concrete slab relative humidity testing to ASTM F2170 can also be performed with reusable relative humidity probes and hole liners (optional).



KIT CONTENTS

1. MRH III – moisture and humidity meter.
2. Ambient Relative Humidity Hygro-i2 Short Probe.
3. Heavy-duty pin-type wood probe.
4. 7.8" insulated pins for in-depth penetration using pin probe.
5. 8 x Ambient RH Probe Hole Liners.

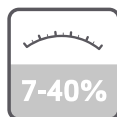
Product Code: BSIZK5.1



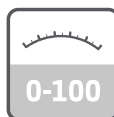
NON-DESTRUCTIVE



AMBIENT
RH, T, DP, gr/lb



WOOD %MC PIN
READING RANGE



COMPARATIVE
READING RANGE

SPECIFICATIONS

MRH III - SPECIFICATIONS & MEASURING RANGE



The Tramex MRH III Moisture and Humidity Meter is a hand-held digital moisture meter calibrated for most building materials. It also attaches to an optional plug-in Tramex Hygro-i2[®] relative humidity probe and heavy-duty pin type electrodes. Suitable for many industries including Water Damage Restoration, Flooring, Indoor Air Quality, Home Inspection and Pest Control.

| | | | |
|-----------------------------------|--|--|-------------|
| Size: | 6" x 3.5" x 1.5" (150mm x 85mm x 38mm) | Reference scale for building materials: | 0 to 100 |
| Weight: | 240g (8.47oz) | Relative Humidity | 0 → 99% |
| Construction: | ABS Body | (with optional Hygro-i2 [®] probe): | |
| Power: | 9 volt PP3 (included) | Wood Non-invasive Mode (at SG of 0.3): | 5 to 55% MC |
| Display: | Digital | Wood Invasive Mode: | 7 to 40%MC |
| Depth of penetration in concrete: | up to 1 1/4"(30mm) | (with optional wood pin probes) | |

KIT SPECIFICATIONS

| | | | |
|--------|--|---------|-----------------|
| Size: | 13.8" x 9.1" x 3.5" (350mm x 230mm x 90mm) | Weight: | 3.4lbs (1.55kg) |
| Power: | 1 x 9 volt PP3 Battery (included) | | |

