

# TRAMEX REMOTE ENVIRONMENTAL MONITORING SYSTEM ACCESSORY PACK



The TrameX Remote Environmental Monitoring System Accessory Pack adds more Cloud Sensors to your TREMS project. The TREMS-10 comprises 10 CS-RHTA TrameX Cloud Sensors. Multiple Sensors can be used with one Station. Registration and on-site set-up is simple using a QR code check-in procedure. The on-site Sensors, with battery life of up to 15 years, transmit relative humidity, temperature (°C and °F), dew point and grains per pound / grams per kilo readings wirelessly via the TrameX Cloud Station enabling remote monitoring of up to 200 on-site Sensors on the TrameX Cloud platform.

TrameX Cloud is a secure platform to store and report your moisture, temperature and relative humidity measurements, get notified of adverse conditions and quickly monitor status from any browser. There are no subscription fees and there is free data storage for two years with the TrameX Remote Environmental Monitoring System.



## KIT CONTENTS

Product Code: AP-TREMS-10

1. 10 x CS-RHTA TrameX Cloud Sensors
2. 1 x Heavy Duty Protective Carry Case
3. TrameX Cloud Software Monitoring platform (Tablet not included)



AMBIENT  
RH, T, DP, g/kg



TRAMEX CLOUD



ONLINE INFO

# SPECIFICATIONS

## TRAMEX CLOUD SENSOR - SPECIFICATIONS & MEASURING RANGE



Sensors can be easily registered by scanning the QR code on the back of the instrument and clicking 'register' in your Cloud account.

Size:	100mm x 90mm x 35mm (3.94" x 3.54" x 1.38")	Transmission Range:	Over 3kms line-of-sight
Weight:	100g (3.53oz)	Communication Frequency:	Multiple readings per hour
Power:	Built in CR123A battery with up to 15 year lifespan	Identification:	Items individually coded for ease of install and logging identification.
Construction:	ABS enclosure		
Included:	Wall Mounting		

### RELATIVE HUMIDITY SENSOR SPECIFICATIONS

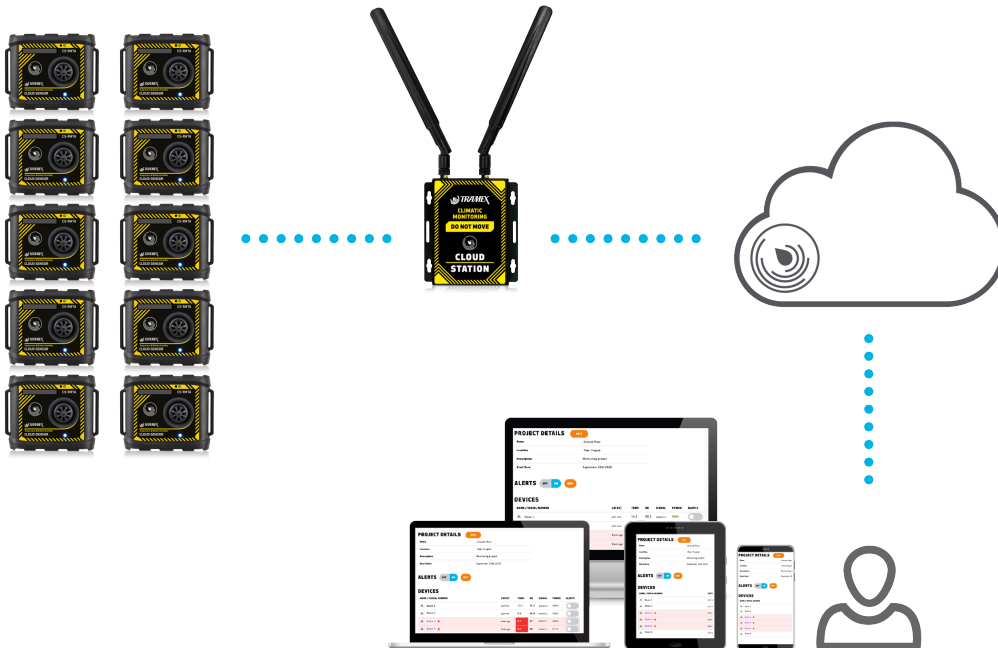
Exceptional Accuracy:	±1.5%RH Range 0% to 80%RH ±2.0%RH Range 80% to 99%RH (@ 25°C (77°F))
Range:	0 to 100%RH
Resolution:	0.1% over the complete range
Drift:	<0.25%RH per year

### TEMPERATURE SENSOR SPECIFICATIONS:

Exceptional Accuracy:	±0.1 °C Range 20°C to 60°C (±0.1°F Range 68°F to 140°F)
Range:	-40°C to 125°C (-40°F to 257°F)
Sensor Protection:	PTFE Film protects sensor opening from water & dust
Drift:	<0.03°C (0.04°F) per year

## TRAMEX CLOUD

The Tramex Cloud stores all your project details and logging information securely and allows for remote monitoring.



# SPECIFICATIONS

## TRAMEX CLOUD

### PROJECT DETAILS

**EDIT**

**Name** Ground Floor

**Location** Main Project

**Description** Monitoring project

**Start Date** September 25th 2020

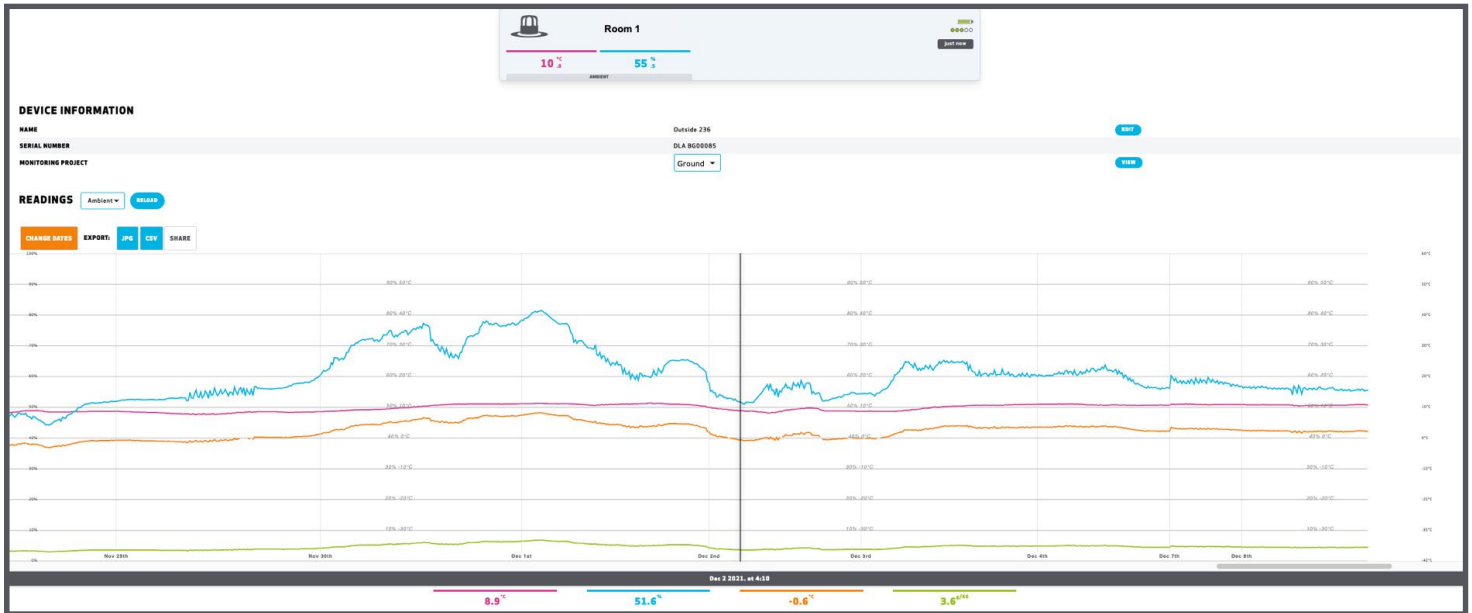
### ALERTS

**OFF** **ON** **EDIT**

### DEVICES

NAME / SERIAL NUMBER	LATEST	TEMP.	RH	SIGNAL	POWER	ALERTS
Room 1	just now	10.1	55.3	●●●○○		<input type="checkbox"/>
Room 2	just now	9.9	56.8	●●●○○		<input type="checkbox"/>
Room 3 ▲	9 min ago	9.7	57	●●●○○		<input type="checkbox"/>
Room 4 ▲	9 min ago	9.7	58	●●●○○		<input type="checkbox"/>
Room 5 ▲	9 min ago	9.5	57.4	●●●○○		<input type="checkbox"/>
Room 6	10 min ago	9.6	55.7	●●●○○		<input type="checkbox"/>

### Detailed logging charts



## KIT SPECIFICATIONS

Size: 510mm x 410mm x 160mm (21.1" x 16.1" x 6.3")

Weight:

4.5kg (9.9lbs)

Power: 10 x CR123A 3-volt batteries (included)

